

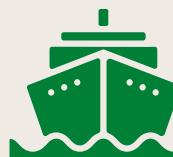
Monthly International Visitor Arrival Report

June 2022

The total number of international visitor arrivals to Fiji in June 2022 was **62,130**. This is a significant growth of 30% from May 2022 arrivals, which stood at 47,813.

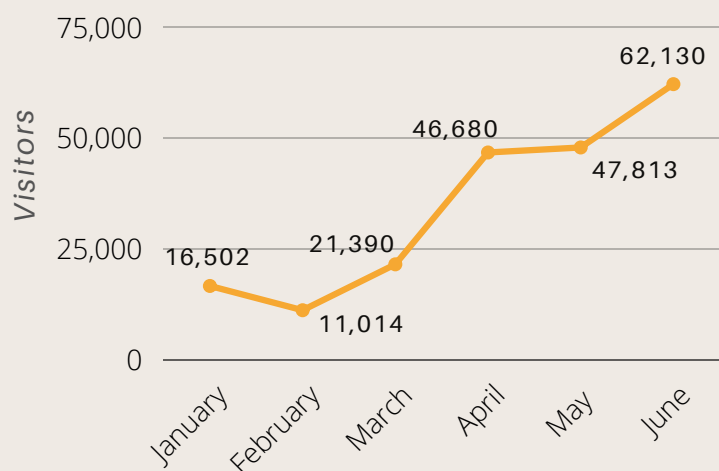


61,211 visitors came by air.

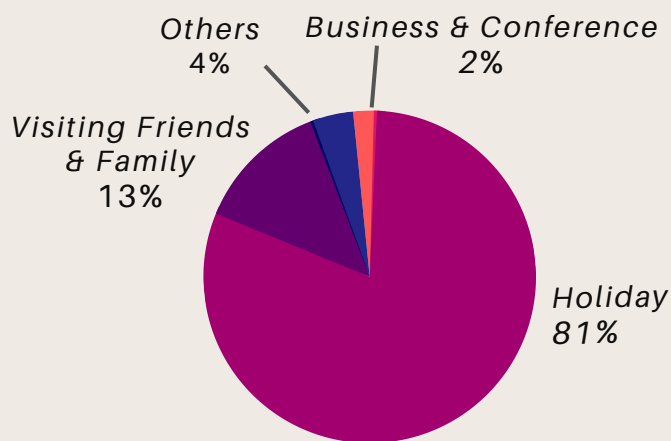


919 visitors came by sea

Year to date arrivals



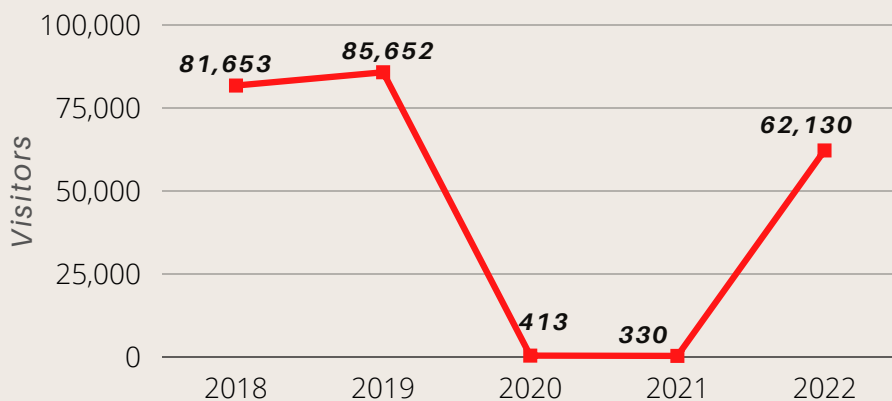
Arrivals by purpose of visit



Total visitor arrivals for the year as of 30 June 2022 stood at 205,529. The average growth rate over the last 6 months is 42%.

Holiday visitors accounted for 81% of all visitors, or 50,023 arrivals. This is a 34.7% increase from the previous month.

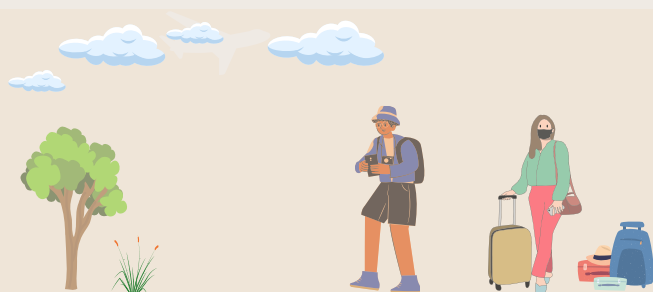
June arrivals for 2018- 2022



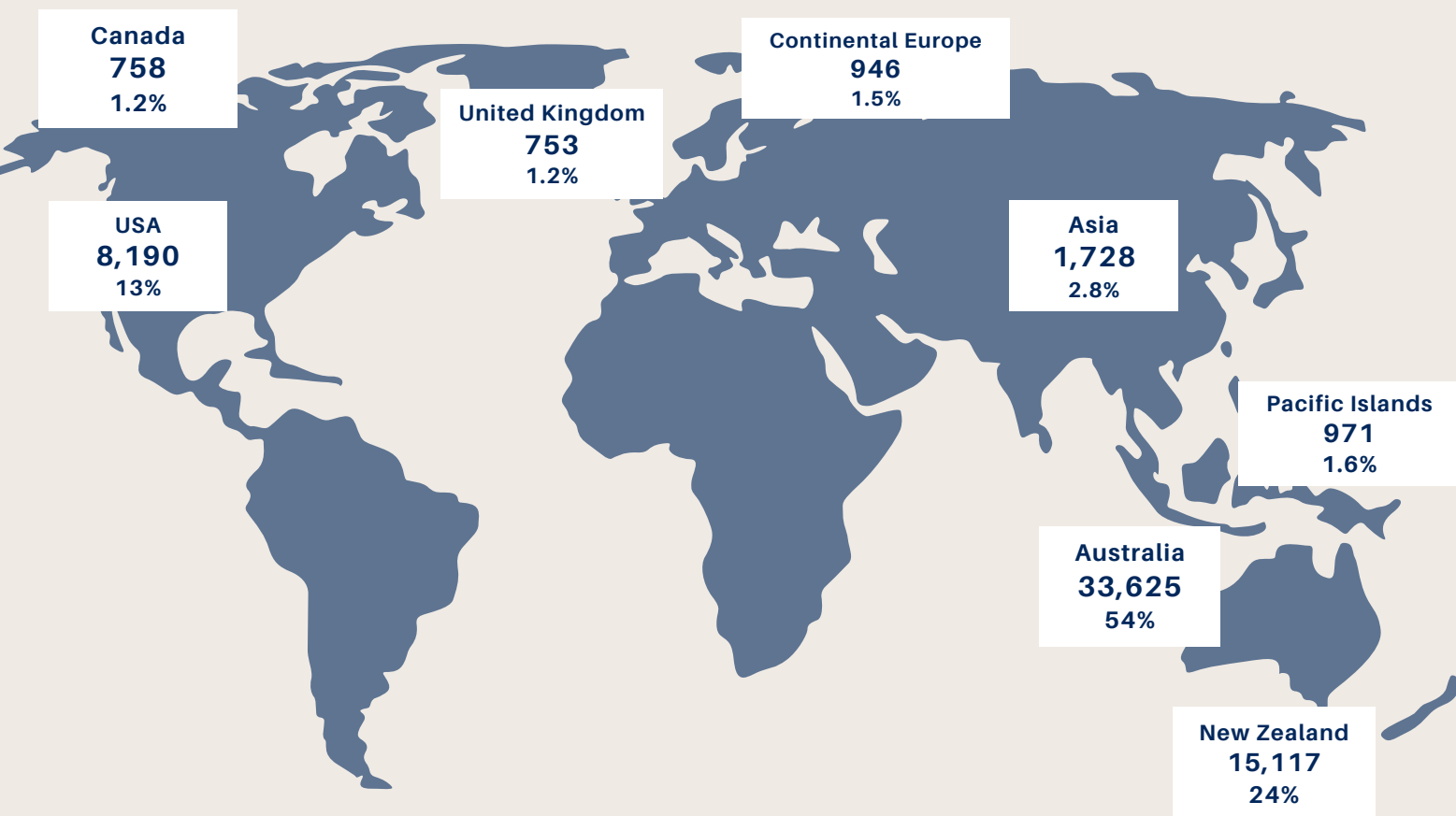
This chart illustrates the visitor arrivals for the month of June over the last five years. Fiji has recovered 72.54% of its June 2019 visitor arrivals in June 2022. Visitor numbers have increased by 18727% from June 2021, and by 14943% from June 2020.

JUNE 2022 VISITOR ARRIVALS

62,130



International Visitor Arrivals by Source Market June 2022



Australia continued to be the largest source of tourist traffic to Fiji, accounting for 54% of arrivals in June 2022. This is followed by New Zealand and the United States, which accounted for 24% and 13%, respectively. Majority of the markets had an increase in visitor numbers from the previous month, with New Zealand, the United States, India, the United Kingdom, Singapore, and the Pacific Islands having the greatest growth.

